



Skiing4all Programs

8 Dec 2024 – 1 May 2025

Fun since 2009

*Skiing and other outdoor activities for children, teenagers and adults
with special educational needs in a safe environment focused on Ability.
Based in the beautiful Austrian resort of Zell am See-Kaprun.*

Contents

About Skiing4all 3

[What Our Guests Say 4](#)

Skiing4all Programs 6

[Skiing4all Program Inclusions 11](#)

[Skiing4all Program Prices 12](#)

[Special Offers 13](#)

Partner Hotels 14

[Hotel Schütthof*** 15](#)

[Hotel Latini**** 17](#)

[Hotel Booking Instructions 19](#)

[Hotel Prices 20](#)

[Local Maps 21](#)

100% Price Transparency 22

Terms & Conditions 25

Letter for School 28

About Skiing4all

Skiing4all, run by a British psychologist, is the only organisation based in a mountain resort, which caters exclusively for persons with special educational needs, their families and friends. **We invite everyone to join one of our skiing programs in the beautiful Austrian resort of Zell am See-Kaprun!**

We welcome children, teenagers and adults with:

- Autistic Spectrum Disorder (ASD)
- Asperger Syndrome
- Down's Syndrome
- ADHD / ADD
- Learning Disability
- Behavioural Disorder
- Cognitive Delay (MR)
- Developmental Disability
- Fragile-X Syndrome
- Other special educational needs

Safety and professionalism

We are proud of our highest safety standards and professionalism, which come from the specialist training and many years of experience:

- British Standards based on the principles of the British Psychological Society (BPS)
- Membership of the National Autistic Society (NAS), Down's Syndrome Association (DSA) and Mencap
- All staff DBS (CRB) checked
- All ski instructors members of the International Ski Instructors Association (ISIA) with up to 25 years of experience
- Incorporating the principles of ABA therapy and working within SPELL and TEACCH framework

Therapeutic benefits

The therapeutic benefits of our programs include:

- Improvement in communication and social skills
- Increased self-confidence
- Enhanced self-esteem
- Increased independence
- Improvement in psychomotor components and fitness levels

Quality time together

Since 2009, we have helped numerous families enjoy quality time together while meeting individual needs of all the family members, including siblings, parents and carers. Here is what you can expect from us:

- **For persons with special educational needs:** One to one professional care, optional buddy support, visual aids (PECS, timetables, social stories, reward charts), sensory area, safe spaces and much more!
- **For siblings and friends:** All siblings and friends from the age of three are more than welcome to take part in our Skiing4all Programs and enjoy all the activities on offer!
- **For parents and carers:** A hassle-free holiday with the full professional support throughout your stay in the resort. With everything taken care of throughout the day, it's time to unwind and attend to your own needs too!

What Our Guests Say...

"A huge thank you for helping to make our skiing holiday a huge success. We both love skiing, but finding the right provision for Anja has always been a major challenge – so finding Skiing4all was a great relief. As you know, we spent a lot of time thinking about how everything would work for Anja – and in hindsight we needn't have worried! Your planning, combined with the work that Maria, Paul and Peter did meant that Anja had the structure and variety that works for her. Everyone in the team was incredible. Peter's quiet persistence and encouragement on the slopes, Maria's fun and activities at the base, and all the outdoor activities with Paul meant that Anja had a fabulous time. We're sure this isn't the first time that you will have been told that one of your visitors was devastated to be going home and not spending more time with you all!"

"We also wanted to say a great big thank you for everything you did with Clara too. Often the siblings of children with additional needs have to step back/be more mature/be more patient than most at their age – so seeing how Clara was able just to be herself, to enjoy being a carefree little girl was incredibly touching."

"I just wanted to write and thank you so much for making their week such a success (and therefore also ours). The boys both blossomed so much and their skiing progressed amazingly. Your care and attention were brilliant, and I felt so relaxed leaving them in your care. Both boys gained confidence."

"A huge thank you to you and the team for what was an amazing holiday. Harry enjoyed it, he told me he was better at it than he thought he would be :) And from my perspective the additional foods he now eats is a milestone!!! What you have going on there is amazing. It is strange to leave your child for such a long time with people you have never met before in a foreign country – however from our first email to meeting I knew you and your team would be just perfect for Harry. All I can do is thank you. You are inspirational."

"Words cannot express how grateful we are to you for Aidan's skiing experience with Peter last week. Peter was a truly wonderful guide and teacher for Aidan and somehow managed to transform our boy from someone who seemed very disinterested in skiing to someone who, of his own volition, expressed how much he enjoyed his skiing holiday on our return. That in itself is monumental as Aidan usually lives in the distant past or is asking 'what are we doing next' without ever seeming to enjoy or want to participate in the now. Yet his response to last week was not all with keeping with this. It was wonderful for us to see him express genuine pleasure and for him to feel proud of his achievements. The Head Teacher called me today to say how 'full of it' Aidan is at school. I am certain that this has increased his confidence and self-belief and I hope that this 'can do' attitude extends to other parts of his life. We will definitely return next year."

"Today was something of a milestone. For the first time Jo and I were able to ski together as a family with our autistic son Evan. I can't thank our friends at Skiing4all enough for their help getting Evan to this point."

"We feel extremely comfortable leaving our son in your care and knowing that you do the utmost to understand him, meet his needs and help him have fun. We feel relaxed knowing this and it is this peace of mind which for us is priceless. In no other situation do we get this respite opportunity. Thank you for enabling us to have a stunning week & for all that you do - he absolutely loved it - a real first! Till the next time!"

"Skiing4all you are a real lifeline! The only chance we get to have a true holiday & knowing that our son is well cared for is so vitally important for our peace of mind so thank you is not enough to appreciate all that you enable us to have and do."

● ● ●

"Our sincere thanks for the wonderful care that was given to Cillian and Seraphina during their week with you. Cillian cried when he realised his week was finished and still asks if he can speak with Peter. We were so thrilled that Cillian got to ski but all the other experiences he was exposed to were super as well e.g. music, the sensory room, playing in the snow etc. We definitely plan to come back next year and can't wait to get the forms to fill out! Again thank you so much for the holiday of a lifetime - the first of very many more to come I am sure."

● ● ●

"We had such a great ski trip knowing that Tiarnan was in great hands with your team. By day three he was running up the steps to you. I got super feedback especially from Peter and how he learned to work with Tiarnan to get him on

Skiing4all Programs

A quick summary...

Family skiing holiday made simple!

So, in short, how does it all work?

It's very simple: we look after our program participants for five and a half hours per day*, while their parents / carers enjoy an uninterrupted day of skiing, relaxed in the knowledge that their loved ones are in safe hands with us!

Our programs start and end daily at our Skiing4all Centre in Zell am See-Schüttdorf *. On individual request and subject to availability, we can also arrange children's pick-ups and drop-offs to the hotel or to any other convenient location for parents. Our program participants get changed for and after skiing in our private, comfortable and peaceful environment, avoiding the busy ski shop area. This helps to minimise any possible anxiety associated with crowded and noisy places, further enhancing our already high health and safety standards. Throughout the day, we help our program participants get in and out of their skiing gear and transfer them between the slopes, our centre and various outdoor and indoor activities.

* Except for our new shorter ski-only Program XL-SO, which lasts for three and half-hours per day. It starts and ends by our meeting point near the ski lift.

Program Duration: 5 or 6 days

Our Skiing4all Programs typically run for 5 days from Sunday to Thursday. Subject to availability, it is possible to extend the program to 6 days, to include Friday.

Program Type: S, M, M/L, L, XL-SO and XXL

We have created our programs based on our many years of experience, making sure that there is a suitable program for every child, teenager or adult with special educational needs, as well for their siblings and friends. As always, we have taken great care to match our program schedules to those offered by our partner ski schools so that everyone in the family can make the most of their skiing holiday.

We continuously update our program range to reflect our families' requests and changing circumstances. Please see our new offers: Program M/L and XL-SO.

You will find a detailed description of all our programs on pages 8-9, followed by a summary table on p.10 to help you see all the program options at a glance.

👉 Program Timing: When to come

SPECIAL WEEKS:

Alpine Advent 8th - 24th December 2024

This is your chance to enjoy the magical atmosphere of Advent in the Alps, with its Christmas Markets, brass bands, workshops and carol concerts! Wonderful opportunity to admire Salzburg with the Christmas lights on, supposedly the most beautifully lit city in Europe. Perhaps enjoy the ride in the horse-drawn carriage through the Old Town under the blanket of snow, surrounded by the Alpine peaks. An unforgettable experience!

Christmas

Don't just dream of white Christmas, enjoy it with us! There is no more magical time than Christmas in Zell am See, with the sleigh rides, mulled wine, carol singers and presents waiting for children under the snow-capped trees. A picture-perfect idyll!

"Fasching" - the end of Carnival

This season, the vibrant *Fasching* celebration will fall during our Skiing4all program running from Monday 2nd February 2025. Zell am See town will feature fun children's parades with mascots and you might be able to spot colourful costumes on the slopes, including skiers in pajamas!

Easter

Whether at Schmitten mountain in Zell am See or at our Kaprun glacier (we are lucky to be able to ski almost all year round), Easter is a wonderful time, with long sunny days, creating perfect opportunity to relax at our "snow beach" after the day's skiing. Children love the Easter egg hunt with a difference, looking for their treasures in the snow!

THE MOST SPECIAL LOW SEASON!

We are aware of the current policy on taking children out of school during the term time. However, in the recent years many of the head teachers, having recognised the therapeutic value of their pupils' experience with us, let our young skiers join us in the term time (at the end of this pack we provide a letter for your child's school to assist you). We particularly recommend the weeks before Christmas and January, when the slopes are quiet with perfect snow conditions, and are simply ideal for persons with special educational needs. There are no lift or restaurant queues and of course you get a better value for money: lower program prices, cheaper air fares, accommodation and ski passes!

Program S: “Skiing Foundation Course”

Schedule: Five and half hours per day (between 08.30 a.m. and 4.00 p.m., exact times subject to availability), **with no formal skiing sessions but rather various activities related to snow and skiing.**

Included activities (all optional): sledging; snow-shoeing; horse riding; visit to Alpine farm or animal rescue centre; mountain trip with outdoor skills; town trip with life skills; Collie dog therapy session; play & activity park or Nordic walk; indoor bouldering; arts & crafts; music, movement & dance sessions; and various other indoor workshops, sports and games.

Recommended for: children, teenagers and adults with special educational needs (minimum age 4 years), and their siblings or friends (between 3 and 10 years old).

This program is recommended for children who are still too young for skiing, and for those children, teenagers and adults who due to their high anxiety levels associated with new places and activities, should begin their skiing in a very gradual way (true especially for the participants on ASD spectrum). During their time with us, among other fun activities, the participants get introduced at their own pace to the world of skiing through play, games, short trips to the slopes, and activities related to snow, skiing and equipment. The overall aim is to encourage and facilitate skiing in the future, minimising any possible anxiety associated with trying this new activity. In our experience Program S is a great foundation, on which to build skiing skills the following season. We have found that a week happily spent with us is a great predictor of the future skiing success!

☞ *TIP: Our Program S is also a great contingency plan for those parents / carers who would like to book our skiing program but are not sure if the prospective program participant would enjoy skiing as much as we do!*

Program M: 1 hour skiing per day (in one session) plus other activities

Schedule: Five and half hours per day (between 08.30 a.m. and 4.00 p.m., exact times subject to availability), including **1 hour of one to one skiing per day.**

Other included activities (all optional): sledging; snow-shoeing; horse riding; visit to Alpine farm or animal rescue centre; mountain trip with outdoor skills; town trip with life skills; Collie dog therapy session; play & activity park or Nordic walk; indoor bouldering; arts & crafts; music, movement & dance sessions; and various other indoor workshops, sports and games.

Recommended for: children, teenagers and adults with special educational needs (minimum age 4 years), and their siblings or friends (between 3 and 10 years old).

This program is perfect for complete beginners, very young children and those persons whose anxiety levels, attention span, fitness levels or other factors, will not allow them to ski for longer than one hour at a time. The skiing sessions take place primarily at the nursery slopes equipped with the easiest “magic carpet” type lifts. Please note that following the assessment of individual needs and discussion with parents or carers, we might suggest that some complete beginners with special educational needs would benefit from spending their first day getting accustomed to the new environment and staff, with skiing starting on the second day. In our experience, this gradual introduction helps many skiers minimise their anxiety, giving them much needed time to get used to the new place, people and activities. This introduction day usually helps more anxious participants achieve more during the rest of the week than by starting to ski unprepared on their first day.

☞ *TIP: We would also recommend Program M as a perfect “trial course” for those who are not sure if the prospective program participants are ready for skiing! Should a program participant prefer other activities after all, or feel a bit under the weather one day, they can change to our Program S free of charge at any point and for any duration.*

Program M/L: 1.5 hours skiing per day (in one session) plus other activities

Program L: 2 hours skiing per day (in one session) plus other activities

Schedule: Five and half hours per day (between 08.30 a.m. and 4.00 p.m., exact times subject to availability), including **1.5 hours (M/L) or 2 hours (L) of one to one skiing per day**.

Other included activities (all optional): sledging; snow-shoeing; horse riding; visit to Alpine farm or animal rescue centre; mountain trip with outdoor skills; town trip with life skills; Collie dog therapy session; play & activity park or Nordic walk; indoor bouldering; arts & crafts; music, movement & dance sessions; and various other indoor workshops, sports and games.

Recommended for: children, teenagers and adults with special educational needs (minimum age 5 years), and their siblings or friends (between 4 and 17 years old).

This program is a perfect combination of skiing sessions with the other activities, and is suitable for children, teenagers and adults, from beginners to advanced skiers. The skiing takes place at the whole mountain (the complete beginners start at one of the nursery slopes equipped with the “magic carpet” type lift).

☞ *TIP: Programs M/L and L are recommended for anyone from beginner to advanced level. The main difference between the two programs lies in the number of skiing hours included each day (children skiing less will take part in more of the other activities).*

Program XL-SO: 3 hours skiing per day (in one session)

Schedule: Three and half hours per day, typically from 08.45 a.m. to 12.15, or from 12.30 to 4.00 p.m., including **3 hours of one to one skiing per day**.

This is our shorter ski-only program, which includes skiing only and no other outdoor activities.

Recommended for: children, teenagers and adults with special educational needs (minimum age 6 years), and their siblings or friends (aged over 5).

This program is perfect for older children, teenagers and adults who can, as a minimum, ski in a straight line and stop in a snow plough (“pizza”) on a blue beginners' slope. Skiing the whole mountain.

☞ *TIP: Program XL-SO is especially recommended for the intermediate and advanced skiers who are sporty and physically fit. Please note that from our experience, skiing for three hours in a single session is not suitable for complete beginners, very young children and persons who tire easily.*

Program XXL: 4 hours skiing per day (in two sessions)

Schedule: Five and half hours per day (between 08.30 a.m. and 4.00 p.m., exact times subject to availability), including **4 hours of one to one skiing per day**.

In this program most of the time is spent skiing, with a lunch break on the mountain.

Recommended for: children, teenagers and adults with special educational needs (minimum age 10 years), and their siblings or friends (aged over 7).

This program is a perfect choice for older children, teenagers and adults who can, as a minimum, make snow plough turns and stop in a snow plough on a blue slope. Skiing the whole mountain.

☞ *TIP: Program XXL is especially recommended for the intermediate and advanced skiers with high fitness levels. Not suitable for complete beginners, very young children and persons who tire easily.*

2024/25 Skiing4all Program Types Summary

Program type	Daily program duration	Recommended for							Daily skiing		Other included activities <i>(All optional and chosen in the resort according to the individual needs, interests and age)</i>										
		Children: min. age		Teenagers		Adults with special needs	Minimum fitness level	Current skiing level			Hours on one to one basis	Arrangements	Sledging	Snow-shoeing	Horse-riding	Visit to Alpine Farm / Animal Rescue Centre	Mountain trip: Outdoor skills	Town trip: Life skills	Collie dog therapy	Play & activity park / Nordic walk	Indoor bouldering
		With special needs	Sibling with no special needs	With special needs	Sibling with no special needs																
S	5.5 hours	4 yrs	3 yrs	✓		✓	very low to average	beginner	no formal skiing	Prep Course: Activities related to snow and skiing.	✓	✓	✓	✓	✓	✓	✓	✓	✓	✓	✓
M	5.5 hours	4 yrs	3 yrs	✓		✓	low to average	beginner	1 hour	Continuos session. Skiing mostly nursery slopes.	✓	✓	✓	✓	✓	✓	✓	✓	✓	✓	✓
M/L	5.5 hours	5 yrs	4 yrs	✓	✓	✓	average	beginner intermediate advanced	1.5 hours	Continous session with breaks when required. Skiing the whole mountain.	✓	✓	✓	✓	✓	✓	✓	✓	✓	✓	✓
L	5.5 hours	5 yrs	4 yrs	✓	✓	✓	average	beginner intermediate advanced	2 hours	Continous session with breaks when required. Skiing the whole mountain.	✓	✓	✓	✓	✓	✓	✓	✓	✓	✓	✓
XL-SO	3.5 hours	6 yrs	5 yrs	✓	✓	✓	average to high	intermediate advanced	3 hours	Continous session with breaks when required. Skiing the whole mountain.	This is our shorter ski-only program, which includes 3 hours of skiing and no other outdoor activities.										
XXL	5.5 hours	10 yrs	7 yrs	✓	✓	✓	high	intermediate advanced	4 hours	Skiing divided into two sessions. Skiing the whole mountain.	In this program most of the time is spent skiing, with a lunch break on the mountain.										

Skiing4all Program Inclusions

Our programs include the following:

- ✓ **One-to-one skiing sessions** with a ski instructor experienced in working with children and adults with special educational needs, trained and overseen by a British psychologist (except Program S with no formal skiing)
- ✓ **Ski pass**
- ✓ **All skiing equipment hire:** skis, poles, boots, helmet, high visibility vest and other safety equipment
- ✓ **Welcome Meeting** for parents / carers at our centre on the first morning
- ✓ **Medal Ceremony** - all family and friends welcome!
- ✓ **Diploma, medal and souvenir**

In addition, our programs S, M, M/L and L include the following:

- ✓ **Variety of outdoor and indoor activities** (all optional and chosen in the resort according to the individual needs, interests and age - see table on p.10):
 - ❄ Sledging
 - ❄ Snow-shoeing
 - ❄ Horse riding
 - ❄ Visit to Alpine farm or animal rescue centre
 - ❄ Mountain trip: Outdoor skills
 - ❄ Town trip: Life skills
 - ❄ Collie dog therapy session
 - ❄ Play & activity park or Nordic walk
 - ❄ Indoor bouldering
 - ❄ Arts & craft classes
 - ❄ Music, movement and dance sessions
 - ❄ Various other workshops, indoor sports and games
- ✓ **Maximum two participants with special educational needs to one staff member during all the above outdoor and indoor activities** (one to one care upgrade available at a supplement, subject to availability, see p.23 of our brochure)
- ✓ **Total of five and a half hours with us each day** between the hours of 08.30 a.m. and 4.00 p.m., exact times subject to availability, weather conditions, etc.; (time extension available at a supplement, see p.24 of our brochure)

Skiing4all Program Prices 2024/25 in EUR based on program type (S - XXL)

Program Dates (Sunday to Thursday)	When staying at our partner hotels (Schütthof or Latini) HOTEL COST NOT INCLUDED! ¹						When staying at your own accommodation					
	S	M	M / L	L	XL-SO	XXL	S	M	M / L	L	XL-SO	XXL
8 - 12 Dec 2024	x	x	x	x	2490	3090	x	x	x	x	2990	3590
15 - 19 Dec 2024	2190	2490	2690	2850	x	x	2690	2990	3190	3350	x	x
22 - 26 Dec 2024	2190	2490	2690	2850	x	x	2690	2990	3190	3350	x	x
29 Dec 2024 - 2 Jan 2025	2190	2490	2690	2850	x	x	2690	2990	3190	3350	x	x
5 - 9 Jan 2025	1790	2150	2250	2350	x	x	2290	2650	2750	2850	x	x
12 - 16 Jan 2025	1790	2150	2250	2350	x	x	2290	2650	2750	2850	x	x
19 - 23 Jan 2025	1950	2490	2690	2850	x	x	2450	2990	3190	3350	x	x
26 - 30 Jan 2025	1950	2490	2690	2850	x	x	2450	2990	3190	3350	x	x
2 - 6 Feb 2025	2190	2490	2690	2850	x	x	2690	2990	3190	3350	x	x
9 - 13 Feb 2025	2390	2690	2890	x	x	x	2890	3190	3390	x	x	x
16 - 20 Feb 2025	2390	2690	2890	x	x	x	2890	3190	3390	x	x	x
23 - 27 Feb 2025	2390	2690	2890	x	x	x	2890	3190	3390	x	x	x
2 - 6 Mar 2025	2190	2490	2690	x	x	x	2690	2990	3190	x	x	x
9 - 13 Mar 2025	2190	2490	2690	x	x	x	2690	2990	3190	x	x	x
16 - 20 Mar 2025	2190	2490	2690	2850	x	x	2690	2990	3190	3350	x	x
23 - 27 Mar 2025	2190	2490	2690	2850	x	x	2690	2990	3190	3350	x	x
30 Mar - 3 Apr 2025	2090	2350	2490	2590	x	x	2590	2850	2990	3090	x	x
6 - 10 Apr 2025	2290	2590	2750	2890	x	x	2790	3090	3250	3390	x	x
13 - 17 Apr 2025	2290	2590	2750	2890	x	x	2790	3090	3250	3390	x	x
20 - 24 Apr 2025	2290	2590	2750	2890	x	x	2790	3090	3250	3390	x	x
27 Apr - 1 May 2025	x	x	x	x	2490	3090	x	x	x	x	2990	3590

¹ The discounted price for one Skiing4all Program Participant per family only (applies to the lowest program value). See p.14 for more details.

x - Program not usually offered on these dates but may be available on request - please enquire.

Special offers!!!

-10%

**For the second
Skiing4all
Program Participant
in the Family**

*Discount applied to the lower value program.
Not valid during school holidays.*

FREE

**Skiing4all Program
for the Third Participant**

*The Third Participant in a family, able to share
skiing and all the activities with their sibling
(i.e. with the Second Participant)
receives a free Program!*

*Please enquire for more conditions of this offer.
Discount applied to the lower value program.
Not valid during school holidays.*

FREE

**6th day SKI PASS
& EQUIPMENT HIRE**
**for all Skiing4all
Program Participants**

*Valid for bookings made by
31st October 2024.*

Skiing4all Partner Hotels

We put a lot of effort into choosing the best available accommodation for our guests. After 15 years of co-operation with various providers, we have now narrowed our selection down to two absolute favourites of our Skiing4all guests, the places where they happily return year after year. **These hotels understand the needs of our skiing families, including the provision of various special diets, such as the popular gluten-free diet.**

Our two partner hotels: [Schüttthof](#) (3-star) and [Latini](#) (4-star) are sister hotels under one management, and both offer something truly unique in terms of their service, location and value for money. They are next door to each other, both within 1-2 minutes' walk to our Skiing4all Centre, and only 4-5 minutes on foot to the slopes! Please see the map on p.21.

Save 500€ off our standard 5-day Skiing4all Programs simply by staying at one of our partner hotels!

Schüttthof*** and Latini**** hotels kindly contribute to Skiing4all program running costs for each family staying with them, and hence **we are able to offer lower program prices to those guests who stay at one of our partner hotels, and who book their rooms directly by email with the property, as instructed on p. 19.**

If you would rather stay at your own accommodation, it is fine with us too, but unfortunately your program price will not include the discount mentioned above.

General location of the hotels:

In Schüttdorf, a quieter district of Zell am See, on the south side of the lake, yet near bus stops, restaurants, cafés, banks and shops.

How to get from the hotels to [Skiing4all](#):

Just walk about 200 metres along the Kitzsteinhornstrasse street (pavement, flat area, no uphill sections).

How to get from the hotels to skiing:

Walk about 400 metres to the Areit ski base, which is perfect for all the family members. It boasts not only the best nursery slopes in Zell am See for the little ones but also the easiest access to the high mountain slopes for the more advanced skiers by the areitXpress 10-seater gondola with heated seats!

The Areit cable car valley station provides everything you might need for a hassle-free ski holiday, all in one building: our partner [Bründl ski hire](#) shop with a free ski depot (previously called "Intersport"), ski pass sales, ski lockers, tourist information, ski shop, toilets, restaurant and bars.

Hotel Schütthof

At [Hotel Schütthof](#) (three-star), the traditional Austrian hospitality and a cosy ambience at fantastic rates are awaiting you from the moment you step in. You will find great amenities and services at this 3-star hotel, which we would class as a 4-star!

The comfortable and pleasant rooms are oases of well-being and the restaurants and bars invite you to stop for a delicious meal. The hotel also boasts a beautiful new wellness & spa area. Guests can also enjoy an extensive garden and playground for children.

Included in the hotel price (see p.20 for prices):

- ✓ Half-board (gourmet breakfast buffet, afternoon snack and dinner buffet with varying themes);
- ✓ Free use of the hotel Vulcano Spa with saunas, steam room, beautiful terrace and indoor relaxation area overlooking the Kitzsteinhorn glacier (extra charge for massage and beauty treatments);
- ✓ 10% off the in-house ski rental.

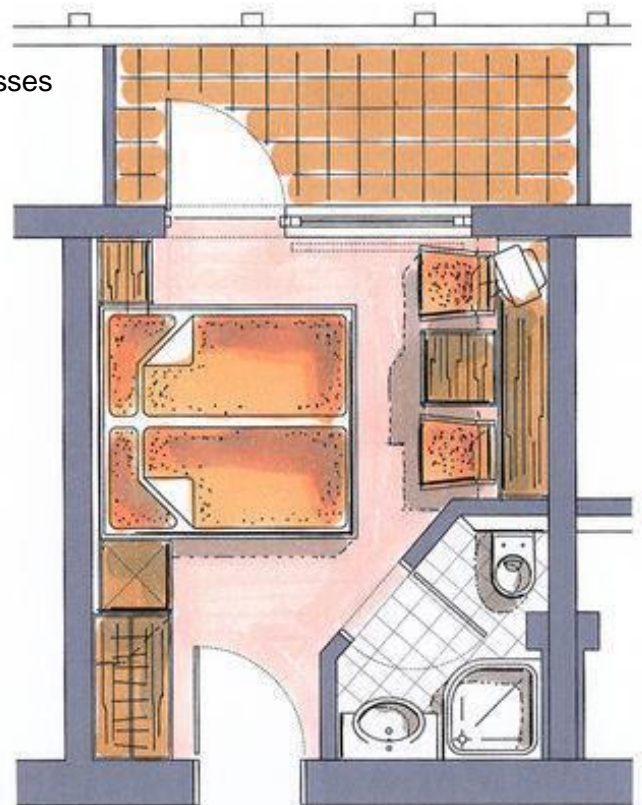
Room types: Double "Areit", Double "Schmitten" and Junior Suite "Kitzsteinhorn".

Schütthof Hotel*** Double Room "Areit":

- comfortable double bed with high quality mattresses
- small sitting area
- bathroom with shower, WC, towel warmer, hairdryer, cosmetic mirror and vanity set
- bathrobe and slippers
- bag with towels for the spa
- cable TV with radio
- WiFi, telephone
- safety box
- some rooms with balcony

approx. 20 m²

sleeps up to 2

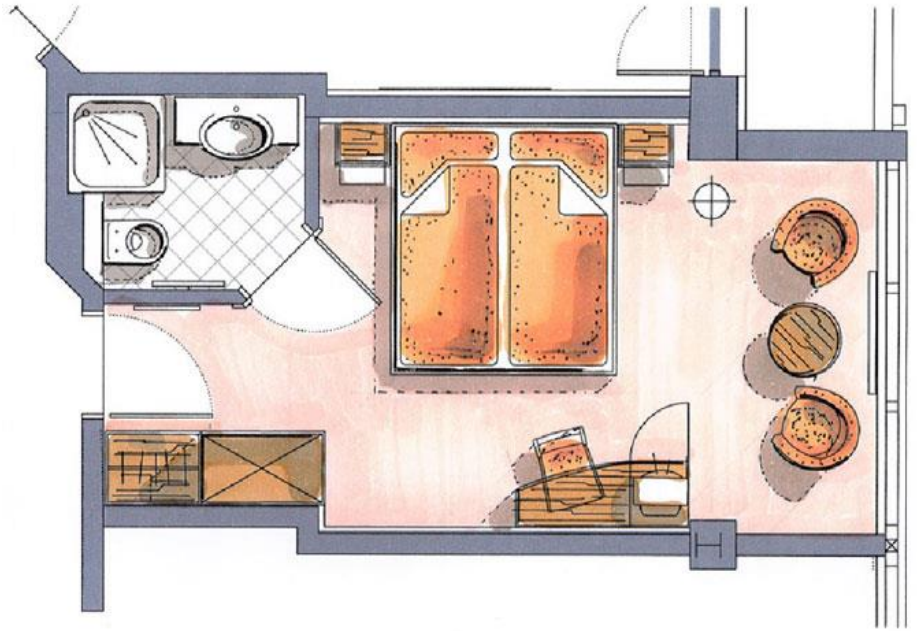


Schütthof Hotel*** Double Room "Schmitten":

- comfortable double bed with high quality mattresses
- sitting area
- bathroom with shower, WC, towel warmer, hairdryer, cosmetic mirror and vanity set
- bathrobe and slippers
- bag with towels for the spa
- cable TV with radio
- WiFi, telephone
- safety box
- some rooms with balcony

approx. 22 - 25 m²

sleeps up to 3



Schütthof Hotel *** Junior Suite "Kitzsteinhorn":

- comfortable double bed with high quality mattresses
- living room with a double sofa bed and a sitting area
- bathroom with shower, WC, towel warmer, hairdryer, cosmetic mirror and vanity set
- bathrobe and slippers
- bag with towels for the spa
- cable TV with radio
- WiFi, telephone
- safety box
- some rooms with balcony

approx. 35 m²

sleeps up to 4 (5 on request)



Hotel Latini ★★★★★

The charming [Hotel Latini](#) (4-star) has much more to offer than just very comfortable hotel rooms, fantastic amenities and excellent value for money. Experience a wonderful holiday with international flair and traditional Austrian hospitality all under one roof!

Large, tastefully decorated rooms and the spacious garden with a playground for children is especially popular with families. There are several restaurants and bars, and an extensive spa area with a beautiful indoor swimming pool, sauna, steam bath and fitness room.

Included in the hotel price (see p.20 for prices):

- ✓ Half-board (gourmet breakfast buffet, afternoon snack, 5-course evening set menu or dinner buffet, children's menu);
- ✓ Free use of the hotel Gold Spa with a beautiful indoor swimming pool, saunas, steam room, infrared booth, spacious relaxation rooms and gym (extra charge for massage and beauty treatments);
- ✓ 10% off the in-house ski rental;
- ✓ Parking space in the hotel garage.

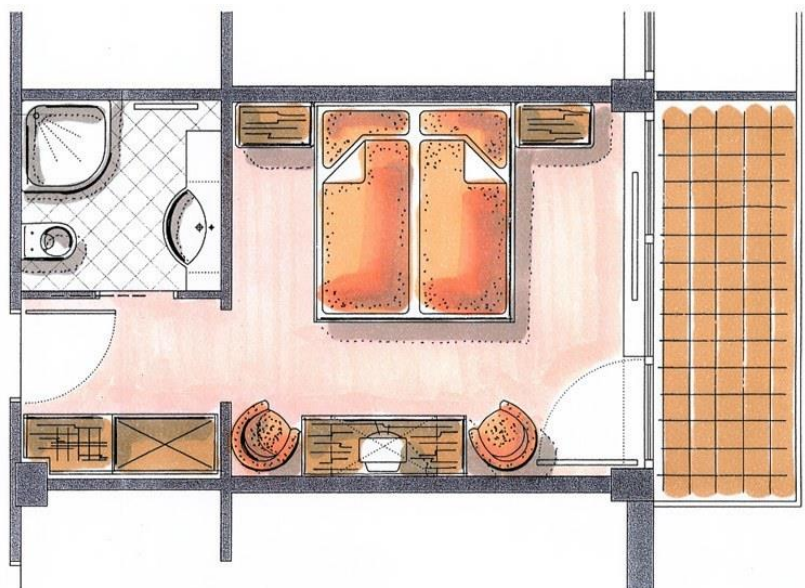
Room types: Double "Alpenrose", Double "Enzian" and Junior Suite "Edelweiss".

Latini Hotel**** Double Room "Alpenrose":

- comfortable double bed with high quality mattresses
- sitting area
- bathroom with shower, WC, towel warmer, hairdryer, cosmetic mirror and vanity set
- bathrobe and slippers
- bag with towels for the spa
- cable TV with radio
- WiFi, telephone
- safety box
- espresso machine
- some rooms with balcony

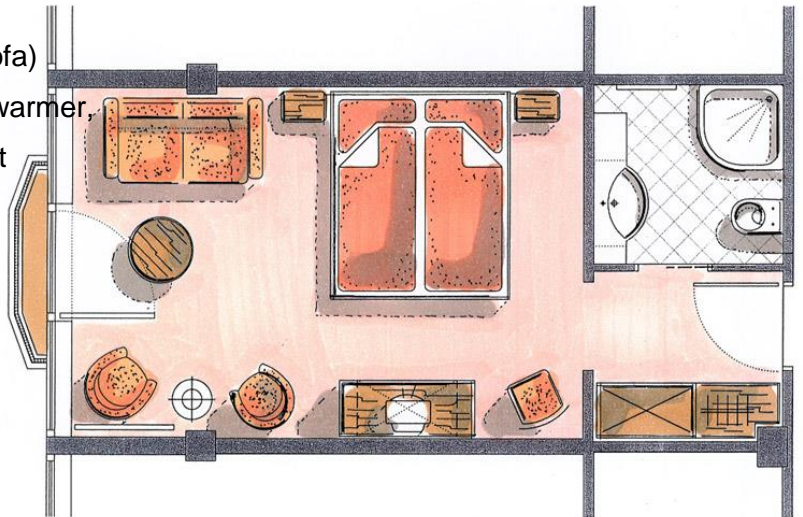
approx. 20 - 25 m²

sleeps up to 2



Latini Hotel**** Double Room "Enzian":

- comfortable double bed with high quality mattresses
- sitting area
- optional 3rd and 4th bed (pullout sofa)
- bathroom with shower, WC, towel warmer, hairdryer, cosmetic mirror and vanity set
- bathrobe and slippers
- bag with towels for the spa
- cable TV with radio
- WiFi, telephone
- safety box
- espresso machine
- some rooms with balcony or French balcony (windows and balustrade down to the floor)

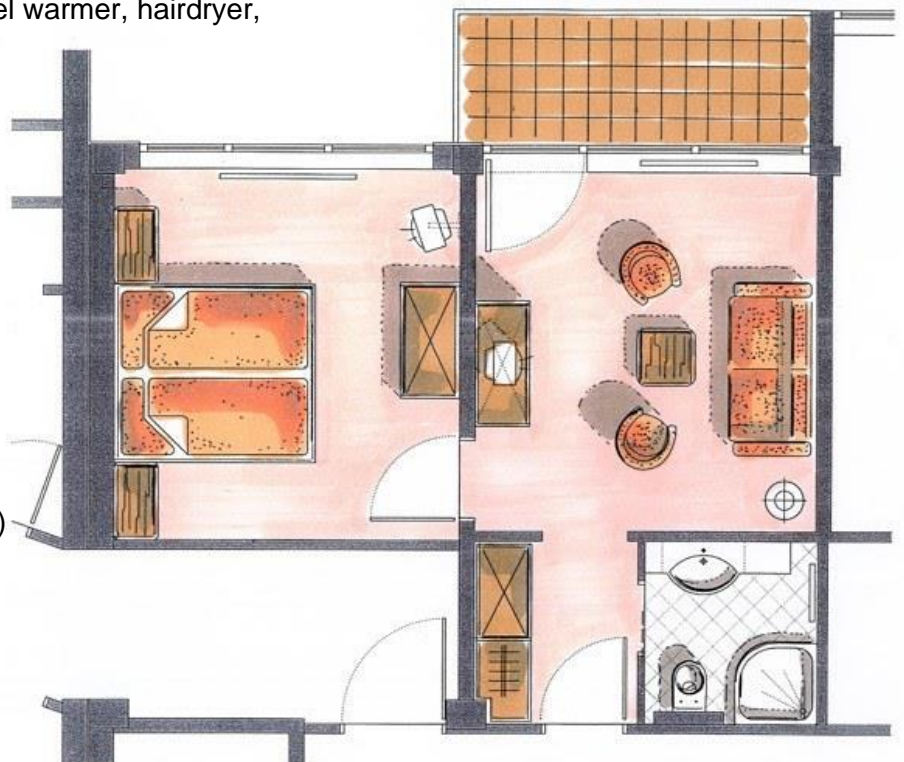


approx. 25 - 28 m²

sleeps up to 4

Latini Hotel**** Junior Suite "Edelweiss":

- bedroom with a comfortable double bed with high quality mattresses
- living room with a comfortable sofa bed (2 extra beds)
- bathroom with shower, WC, towel warmer, hairdryer, cosmetic mirror and vanity set
- bathrobe and slippers
- bag with towels for the spa
- cable TV with radio
- WiFi, telephone
- safety box
- espresso machine
- some rooms with balcony or French balcony (windows and balustrade down to the floor)



approx. 35 m²

sleeps up to 4 (5 on request)

NEW Hotel Booking Instructions

If you would like to stay at one of our partner hotels and qualify for the 500€ discount off our five-day Skiing4all Program prices*, please make sure that you follow these simple guidelines:

1. Contact one of our partner hotels **DIRECTLY BY EMAIL** (see contact details below). **Please note that booking through any agents or online booking services, including our partner hotels' own websites, will *NOT* qualify you for a Skiing4all discount!**
2. In your first email to the hotel please **mention that you will be participating in a Skiing4all Program and that you need the hotel to include Skiing4all as a recipient in your original hotel booking confirmation email.** This is also relevant for the Returning Hotel Guests!
3. **It is absolutely vital that we receive the above email directly from the hotel so please make sure you mention it to the hotel at the first point of contact.** Failing this, we will regretfully need to charge you the full Skiing4all program price.

Our partner hotel contact details:

HOTEL	Website	Email	Telephone
Schütthof***	https://schuetthof.libertashotels.com/en	schuetthof@latini.at	+43 6542 5422
Latini****	https://latini.libertashotels.com/en	office@latini.at	+43 6542 5425

* The discounted price for one Skiing4all program participant per family only (applies to the lowest program value).

2024/25 Hotel Guideline Prices in €

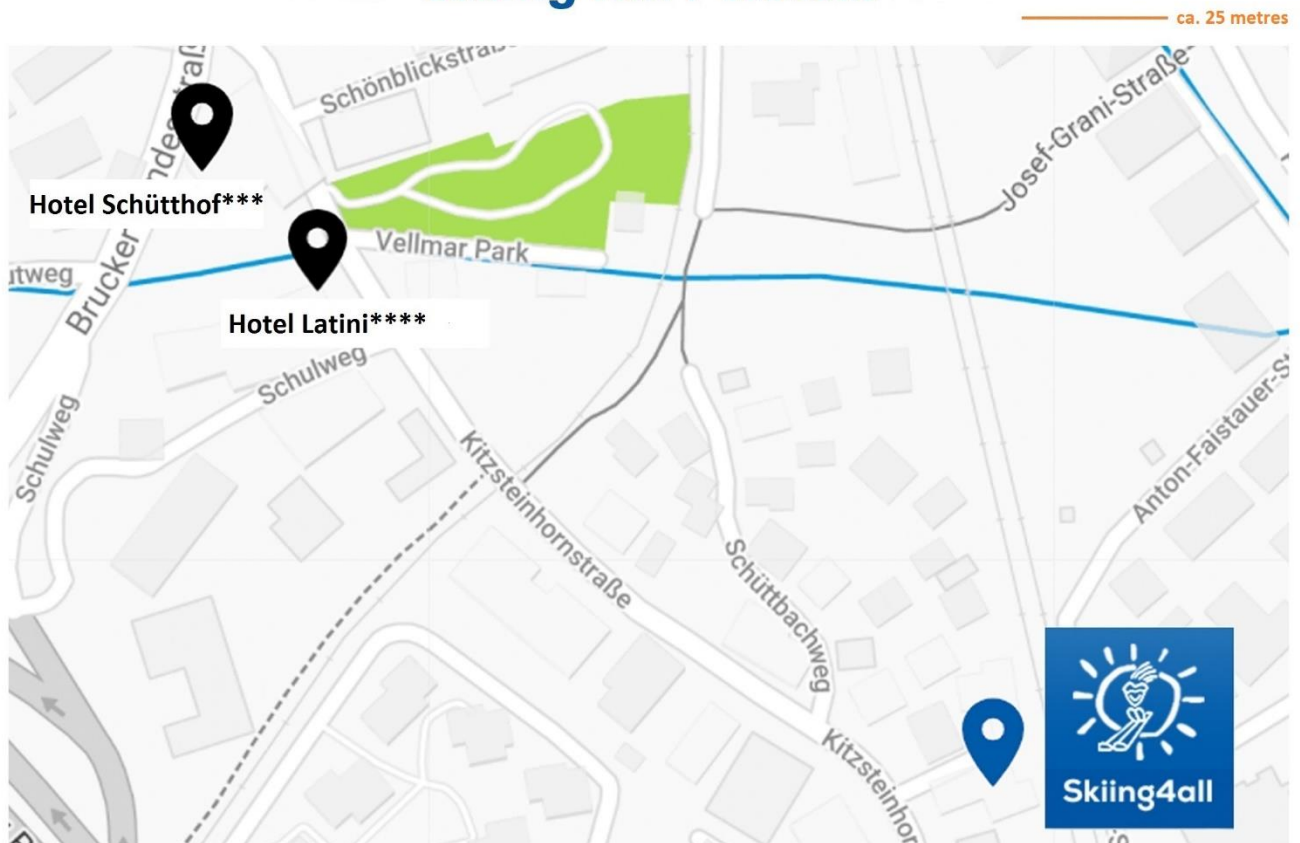
Schütthof Hotel*** prices in EUR per adult per night with half-board			
Season	Double Room "Areit"	Double Room "Schmitten"	Junior Suite "Kitzsteinhorn"
05.12.24 - 21.12.24	104	111	131
21.12.24 - 26.12.24	135	142	155
26.12.24 - 04.01.25	155	162	175
04.01.25 - 01.02.25	114	121	141
01.02.25 - 08.02.25	135	142	155
08.02.25 - 08.03.25	148	150	168
08.03.25 - 22.03.25	114	121	141
22.03.25 - 29.03.25	104	111	131
CHILDREN per night in EUR (in a room with two full paying adults):			
Under 2 years: free 3 - 5 years: 27 6 - 11 years: 45 Over 12 years: 65			

Latini Hotel**** prices in EUR per adult per night with half-board			
Season	Double Room "Alpenrose"	Double Room "Enzian"	Junior Suite "Edelweiss"
30.11.24 - 21.12.24	125	130	154
21.12.24 - 26.12.24	170	175	194
26.12.24 - 04.01.25	195	200	219
04.01.25 - 01.02.25	145	150	174
01.02.25 - 08.02.25	170	175	194
08.02.25 - 08.03.25	185	190	209
08.03.25 - 22.03.25	145	150	174
22.03.25 - 26.04.25	125	130	154
26.04.25 - 29.06.25	115	125	135
CHILDREN per night in EUR (in a room with two full paying adults):			
Under 2 years: free 3 - 5 years: 30 6 - 11 years: 48 Over 12 years: 70			

Zell am See – Schüttdorf



Skiing4all / Hotels



Skiing4all 100% Transparency Policy on Prices

NO SMALL PRINT

NO HIDDEN COSTS

JUST PLAIN ENGLISH

1. Skiing4all Program Prices

At the booking stage, please inform us whether you wish to stay at one of our partner hotels to qualify for 500€ discount off our 5-day Skiing4all program prices. If we offer you a discounted price and you fail to follow the direct hotel booking instructions on p.19 of our brochure, we will regretfully need to charge you the full program price. The discounted price can be offered to one Skiing4all program participant per family only (applies to the lowest program value).

2. Skiing4all Program Booking Deposit

No matter how early you book with us, should our prices increase for the Winter Season 2024/25, we guarantee that your booking price will not change once the agreed booking deposit is received.

Unless agreed otherwise, we will normally require 400€ deposit per program participant. This deposit will be non-refundable in case of cancellation.

3. Changes to your Skiing4all Program Booking

Subject to availability, we might be able to change your original booking (dates, program type, etc.) at an administration charge of 100€ plus any difference in prices between the original booking and the amended booking value.

4. Payment for Accommodation

All payments for accommodation must be made directly to the hotels. The accommodation deposit and balance rules will be set by the accommodation provider, independently of Skiing4all.

5. Skiing4all Program inclusions

All our programs include the items and services as listed on p.11 of this brochure.

6. Skiing4all Program exclusions

Travel to the resort – you will need to arrange your own flights to Austria or Germany (we particularly recommend Salzburg 80 km away, or Munich 200 km away). We will be pleased to forward you the details of airport transfer companies, which you can book in English online. A car hire is also an excellent option from both airports. You could fly to Innsbruck or Vienna too.

Accommodation – this is not included in the program price but we recommend you book with one of our partner hotels. When booking your stay directly by email with one of our partner hotels (see p.19 for details), you will receive 500€ discount off our 5-day Skiing4all program prices, as detailed in the table on p.12. You are free to choose your own accommodation too but we regret that the program price will not be discounted.

Insurance – you are responsible for carrying appropriate insurance for any accidents or incidents whatsoever, which might occur before, during or after participation in Skiing4all Program. Skiing4all cannot be held liable for any costs, which might result from lack of or an inadequate insurance.

Lunch, snacks and drinks - We will provide hot lunch, snacks and drinks for 19€ per day per participant on Programs S, M, M/L and L; and for 24€ per day per participant on Program XXL. Please provide drinks and snacks for participants on Program XL-SO (ski only). Please let us know about the participant's food preferences, special diets and any allergies. We regret that due to the Health & Safety regulations and difficulties associated with consuming own food at the mountain restaurants, we are unable to accept packed lunches. However, we will be happy to carry some favourite snacks and drinks not requiring refrigeration and in their original packaging (cereal bars, etc.). Payment for food is due in cash in the resort.

7. One to one care upgrade

All children, teenagers or adults with special educational needs ski on a one-to-one basis. However, during the other outdoor and indoor activities there is a ratio of maximum of two participants with special educational needs to one staff member (three to one ratio for participants without special educational needs). Please let us know at the time of booking if the person you are booking the program for requires one-to-one care at all times. This upgrade is voluntary for most program participants but **compulsory** for persons:

- displaying serious violent behaviour resulting in a personal injury to oneself or other persons, or serious and/or deliberate damage to third party property (including that of Skiing4all);
- “runners” who repeatedly run away from their carers, require holding hands at all times (other than near road traffic), and need persistent chasing to ensure their safety outdoors;
- with mobility issues resulting in less than average walking speed for the age group.

The more advance notice we have, the more likely we will be able to arrange additional care (125€ supplement per day applies). In the event that one-to-one care is not pre-booked but clearly required, we reserve the right to charge this fee in the resort. In the event that we do not receive the aforementioned fee and/or cannot provide extra care at a short notice, we reserve the right to remove the participant from our program with the refund for the unused program days on a pro rata basis less 50% cancellation charge.

Please contact us prior to booking, if you are not sure whether one-to-one care will be required.

8. Extra slope assistance during skiing

Safety is our top priority and for this reason we require two adults to work with those skiing beginners with special educational needs who weigh over 70 kilograms. By the “beginner” we mean those skiers who are unable to break unaided in a snow plough on a blue slope. Please let us know at the time of booking if the person you are booking the program for weighs over 70 kilograms. The more advance notice we have, the more likely we will be able to arrange additional assistance. Extra charges will apply and will vary according to the program type and season. You will be advised on these charges prior to committing to the booking.

9. Optional extras

Subject to availability, we will be pleased to arrange the following extras for you, which can be settled in the resort:

ITEM	COST	NOTES
One to one care upgrade, per day	125€	Per participant per day (see note 8 above)
Pre-booked program time extension	20€	Per participant per half hour
Ski goggles hire	5€	Per item
Hotel pick up / drop off	17€	One way, Zell am See area only



Kitzsteinhornstrasse 39
5700 Zell am See, Austria
info@skiing4all.com
www.skiing4all.com

Early Booking Skiing4all Booking Terms & Conditions

§ 1 General Information

The following conditions exclusively regulate the legal relationship between you (the "Participant") and Skiing4all. The Skiing4all General Terms & Conditions are expressly accepted by you upon making the booking. By means of this booking, you declare yourself responsible for all contractual obligations pertaining both to you and/or those Participants you have registered. Should any provision of the Skiing4all General Terms & Conditions be or become void, or if the agreement should contain a loophole, the legal effect of the remaining provisions shall remain unaffected. Taking the place of any voided provisions, will be such provisions which, in legally permissible fashion, come closest to the original business intent of the void provision. Oral agreements have not been entered into. Amendments to these General Terms & Conditions must be in writing. This also applies to any amendments to these provisions, their mutually agreed-upon rescission or relinquishment thereof.

§ 2 Contract

By means of the booking, the Participant (or their parents / legal guardians) indicates that he has read and understood the General Terms & Conditions of Skiing4all, and that he accepts these as the substance of the contract. Skiing4all reserves the right to make Program changes at short notice, a right which the Participant expressly acknowledges and does so with full legal force.

§3 Liability

Skiing4all accepts no responsibility for any damage, loss, liabilities, injury or disappointment incurred or suffered by the Participant or his Party, or any damage to their property, as a result of taking part in the Skiing4all Program. Declarations pertaining to services to be provided by Third Parties are based exclusively upon declarations made to us by the responsible service provider. The contractual obligation of Skiing4all is to properly broker the booked recreational services. The proper delivery of booked recreational services in no way constitutes any obligation on the part of Skiing4all itself. Within the framework of the brokered recreational services, Skiing4all assumes no liability in whatever form for the service provider in question, but is rather solely liable for the proper brokerage of the recreational service and the proper disclosure of information from the respective service provider to the Participant. Any liability of Skiing4all towards the Participant for the accuracy of declarations made by the service provider is likewise excluded, in so far as Skiing4all, either through gross negligence or premeditation, did not falsely convey this information. Within the scope of this contract, Skiing4all is also not liable for the consequences of force majeure.

§ 4 Force Majeure

Except where expressly stated in these Booking Conditions, we will not be liable or pay you if we need to cancel your Skiing4all Program booking due to force majeure, meaning that we will not be liable or pay you compensation if our contractual obligations to you are affected by “unavoidable and extraordinary circumstances”, meaning any event beyond our control, the consequences of which could not have been avoided even if all reasonable measures had been taken. Examples include: warfare and acts of terrorism (or threat thereof); civil strife; significant risks to human health such as the outbreak of serious disease including any mutation or variation of, and the ongoing effects of, Covid-19 or SARS-COV2, or natural disasters such as floods, earthquakes or weather conditions which make it impossible to travel safely to the destination or remain at the travel destination; the act of any government or other national or local authority including port or river authorities; industrial dispute; lock closure; natural or nuclear disaster; fire; chemical or biological disaster; unavoidable technical problems with transport; or similar events outside our control or that of the supplier(s) concerned.

§ 5 Insurance

The Participant is responsible for carrying appropriate insurance for any unforeseen events, accidents or incidents whatsoever, including consequences of any epidemic or pandemic, which might occur before, during or after participation, and simultaneously obligates himself to indemnify Skiing4all in this regard. Skiing4all cannot be held liable for any costs, which might result from lack of or inadequate insurance.

§ 6 Payment

Unless agreed otherwise, a deposit of 400€ per program participant shall be due within seven days from the date of Skiing4all booking confirmation email. This deposit will not be reimbursed in the event of cancellation. The remaining amount will be due in cash in the resort: minimum 50% of the remaining balance during our Welcome Meeting, and the final balance before the start of the fourth program day. We draw your attention to the fact that program participation can only be assured upon receipt of these payments.

§ 7 Minors

Persons under 18 must obtain a written permission from a parent or guardian before booking any Program. The Participant must be 18 years of age or older during Welcome Meeting or otherwise be accompanied by an adult. If the Participant is a minor, their parent or legal guardian must execute the necessary affidavit and release.

§ 8 Changes to the Program

Skiing4all Programs are aimed at people with special educational needs (SEN). Due to the specialist nature of providing sports for people with SEN and the limited resources available, it will be the final decision of Skiing4all as to what it is able to deliver. It should be recognised that due to the nature of the ski break, the best/perfect facilities may not always be available. Skiing4all will do its best to offer the Programs as described, however, it may need to be compromise to get the best overall result. This may mean that sometimes the Program will need to be altered, e.g. snow-shoeing or sledging may be offered rather than skiing if the event of adverse weather conditions. Skiing4all will not be liable for any circumstances beyond its reasonable control, including consequences of any epidemic or pandemic, that prevent the Program from being carried out or the Program to be fully enjoyed by the Participant.

§9 Priority for Participants with Special Needs

Due to the specialist nature of providing sport activities for children and adults with special educational needs, at times we might need additional members of staff to care for these persons. On such rare occasions, we reserve the right to alter the arrangements for the participants without special needs by subcontracting the third party services for the skiing portion of our programs only, without altering the overall number of skiing and activity hours with us. Parents / carers will be given a choice between the various types of lessons on offer with an appropriate price adjustment (likely surcharge in case of the private lessons and likely refund in case of the group courses).

§ 10 Final Provisions

The legal relationship between Skiing4all and Participant is governed by the laws of the Federal Republic of Austria.



Kitzsteinhornstrasse 39
5700 Zell am See
Austria
www.skiing4all.com
info@skiing4all.com

9th May 2024

Re: Skiing for Children with Special Educational Needs and their Families

Dear Head Teacher

I am writing to kindly ask you to allow your pupil to join our skiing program for the children with special educational needs and their families during the term time.

Our *Skiing4all* organisation is aimed at the children with special educational needs. While learning to ski is an obvious immediate goal of our programs, we are especially proud of the longer-term benefits they bring. Thanks to the tailored approach of our programs, one-to-one care, and expertise of our staff, many of our young guests improve their communication and social skills, gain greater self-confidence and enhance their self-esteem. Our participants discover new possibilities and overcome personal limits, increasing their independence. On return home, parents often report to us that their children work better at school and enjoy more meaningful relationships with the peers. They love showing off their photos and trophies and enjoy the positive reinforcements of their achievements.

Skiing4all programs are run throughout the winter season but we strongly advise our guests against joining us during the busy UK holiday weeks. The slopes in Zell am See are simply too busy during the school holidays and do not provide ideal environment for our program participants with special educational needs. Conversely, during the term time, the children can learn in the spacious, not crowded areas, avoid queuing at the ski lifts and restaurants, and miss the generally loud and stressful atmosphere in the resort. They can also participate in the other activities such as horse-riding or trekking with llamas, which are unavailable during the busy weeks.

We always encourage the whole family to join our programs. Over the years we have seen the siblings become the invaluable help for the children with special educational needs. Their sheer presence can be reassuring in the alien and unpredictable environment. In addition, the siblings often act as a role model and the shared family activities are often treated as a reward and the positive reinforcement at the end of the individual skiing sessions.

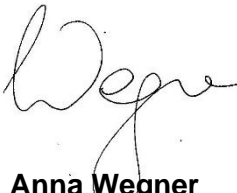
We usually find that the siblings also greatly benefit from their individually tailored activities with us. Often, these children crave the greater attention necessarily given to their brothers or sisters with special educational needs back home. In short, our programs allow the whole family to enjoy their holiday together without compromising each child's individual needs. Unfortunately, despite these great benefits, due to the overwhelming demand for our programs, we can only accept siblings outside the school holidays.

Given this information, I hope that you will be able to grant your pupil a special school leave.

If you need any further details, please do not hesitate to email me or visit our Facebook:
<https://www.facebook.com/Skiing4all/>

Thank you very much for your help and understanding.

Kind regards

A handwritten signature in black ink, appearing to read 'Wegner', with a stylized flourish at the end.

Anna Wegner
BSc (Lon), MSc (Lon), PhD Cand. (Cam)
Skiing4all Director & Founder